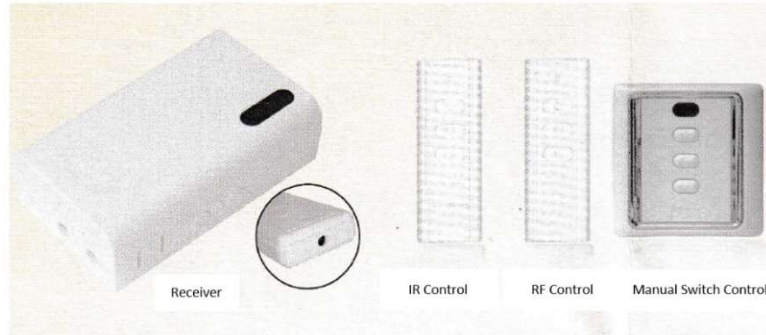




# AVT-CallKitV1&V2 Wiring Instructions (110V or 220V)

## 1. Features:

- Includes IR, RF, 12V trigger and wall switch transmitters and a receiver (110V or 220V).
- Works with motorized projection screen, motorized awning, roller blinds, etc.



## 2. Specifications

Model:	AVT-CallKitV1	AVT-CallKitV2
Working Voltage:	110V ±10%, 50Hz/60HZ	220V ±10%, 50Hz/60HZ
RF Frequency:	433.92MHz	433.92MHz
RF Transmitting Distance:	≥20M	≥20M
IR Frequency:	38KHZ	38KHZ
IR Transmitting Distance:	≥8M	≥8M
12V Trigger Voltage Range:	DC/AC 5V-DC/AC 35V	DC/AC 5V-DC/AC 35V
Power of Output End:	≤300W	≤300W
Working Temperature:	-10°C to 50°C	-10°C to 50°C

### Warning



Power off before wiring



Avoid static damage

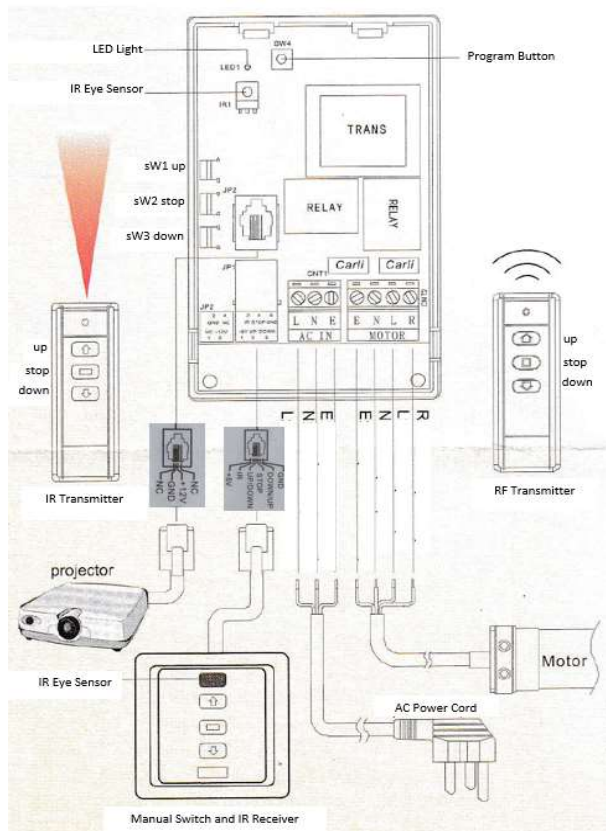


Ground wire must be well connected



Avoid contact with metal

## 3. Wiring



Motor	Diagram	AC 120V 60Hz	AC 230V 50/60Hz
R	Down (Open)	Red	Brown
L	Up (Close)	Black	Black
N	Neutral	White	Blue
E	Ground	Green	Green/Yellow

AC IN -> Power Input	Diagram	AC 120V 60Hz	AC 230V 50/60Hz
E	Ground	Green	Green/Yellow
N	Neutral	White	Blue
L	AC Hot	Black	Brown

Projector	Diagram
NC	No Current
+12V	DC Trigger
GND	Ground

Manual Switch	Diagram
+5V	IR Voltage
IR	IR Signal
U	Up (Close)
S	Stop (green)
D	Down (Open)
G	Neutral

### Manual switch operation instructions:

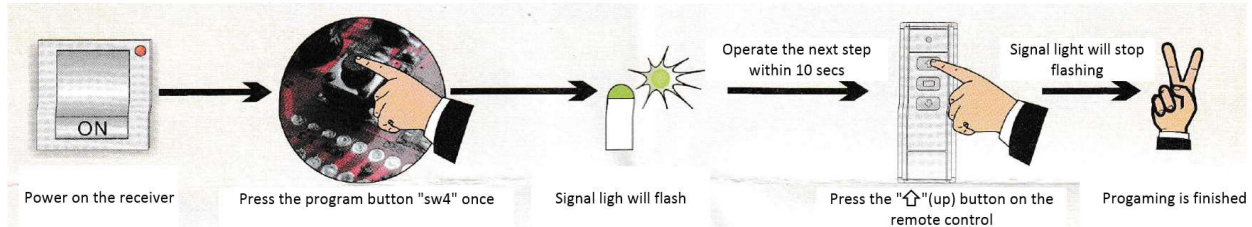
1. Press the up button for less than 1 sec for the motor to move in the up direction.
2. Press the down button for less than 1 sec for the motor to move in the down direction.
3. If pressed for more than 1 sec the motor stops.



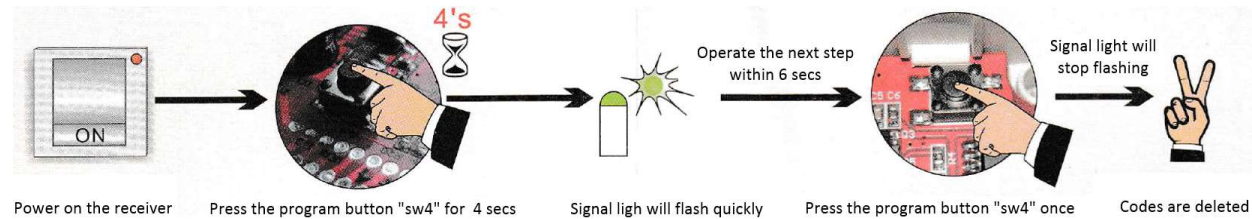
Remarks:

- IR & RF remote controls must be programmed within the transmitting distance.
- Receiver will reset itself if there are no operations within 10 secs.
- No more than twenty IR or RF transmitters may be programmed with one receiver.
- The motor will run for no more than 5 minutes.

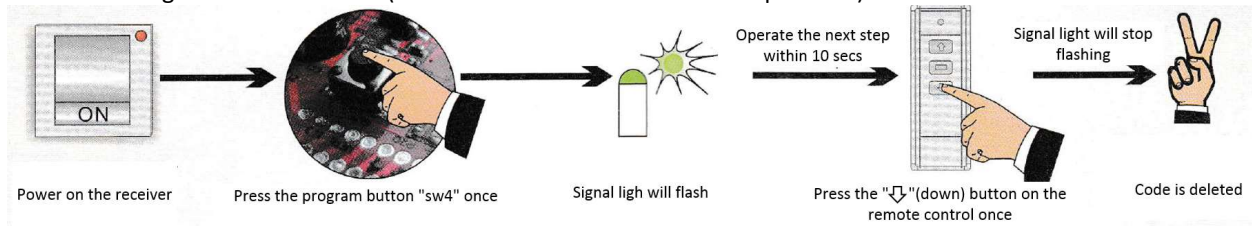
4. Program setting (select the delete channel before operation)



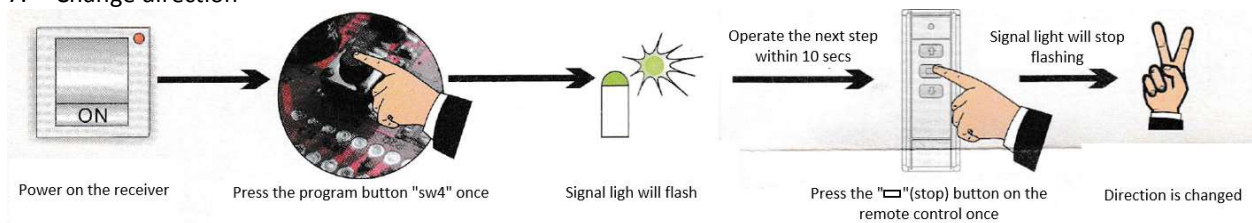
5. Delete all codes on receiver



6. Delete single code on receiver (select the delete channel before operation)



7. Change direction



8. Trouble shouting

Issue	Action
The transmitter's LED is working, but the receiver is not responding	Check the receiver's wiring and check if the programmed setting is correct
The transmitter's LED is not bright or it is dark	Check if the battery is good and is installed correctly
The transmitter is working correctly, but the motor is not responding	Check the motor's wiring. Check if the motor has current.
When pressing the up or down button, the motor runs in the wrong direction	Follow the instruction to change the direction or exchange the up and down wiring of the motor